

- PLAN NOTES:**
- PROVIDE 12" WIDE SLOPE PRE-MANUFACTURED TRENCH DRAIN AS SPECIFIED COMPLETE WITH EXTRA HEAVY-DUTY DUCTILE IRON GRATE. MOUNT FLUSH WITH FLOOR AND CENTERED IN ROOM. REFER TO DETAIL JP3.1 FOR TYPICAL INSTALLATION.
  - RADIANT TUBE HEATERS PROVIDED AND INSTALLED BY MECHANICAL CONTRACTOR. PLUMBING CONTRACTOR TO ROUGH-IN AND CONNECT 3/4" GAS LINE (2 psig) COMPLETE WITH PRESSURE REGULATOR, SHUT-OFF VALVE AND FLEXIBLE HOSE FOR CONNECTIONS. REFER TO DETAIL CP3.1 FOR TYPICAL CONNECTION TO EQUIPMENT.
  - PROVIDE AND INSTALL HOSE BIBB(S) AS SPECIFIED. MOUNT INTERIOR HOSE BIBB(S) AT 3'-6" ABOVE FLOOR. MOUNT EXTERIOR HOSE BIBB(S) AT 1'-6" ABOVE GRADE. RISE 3/4" COLD WATER LINE UP WALL TO OVERHEAD PIPING. REFER TO DETAIL AP3.1 FOR TYPICAL INSTALLATION.
  - PROVIDE AND INSTALL COMPRESSED AIR OUTLET(S) AS SPECIFIED. AIR OUTLETS TO BE MOUNTED AT 4'-0" ABOVE FLOOR. AC-1 = SINGLE OUTLET. AC-2 = DOUBLE OUTLET. RISE 3/4" AIR LINE UP WALL OR COLUMN AND CONNECT TO OVERHEAD PIPING. REFER TO DETAIL DP3.1 FOR TYPICAL OUTLET INSTALLATION.
  - EXISTING AIR COMPRESSOR FURNISHED BY OWNER AND INSTALLED BY CONTRACTOR. REFER TO DETAIL HP3.1 FOR TYPICAL PIPING CONNECTIONS. FIELD VERIFY EXACT CONNECTION SIZES WITH EXISTING EQUIPMENT. PROVIDE FITTINGS AS REQUIRED FOR CONNECTION.
  - EXISTING PRESSURE WASHER FURNISHED BY OWNER AND INSTALLED BY CONTRACTOR. ROUGH-IN AND CONNECT 1" COLD WATER LINE TO EQUIPMENT WITH SHUT-OFF VALVE. FIELD VERIFY EXACT CONNECTION SIZES AND LOCATIONS WITH EXISTING EQUIPMENT. PROVIDE FITTINGS AS REQUIRED FOR CONNECTION.
  - EXISTING PART WASHER FURNISHED BY OWNER AND INSTALLED BY CONTRACTOR. PARTS WASHER IS SELF-CONTAINED UNIT. COORDINATE WITH OTHER EQUIPMENT AND PIPING.
  - EXISTING OIL RECOVERY SYSTEM AND PUMP FURNISHED AND INSTALLED BY OWNER. ROUGH-IN AND CONNECT 3/4" COMPRESSED AIR LINE WITH SHUT-OFF VALVE. FIELD VERIFY EXACT CONNECTION SIZE AND LOCATION WITH EXISTING EQUIPMENT.
  - UNIT HEATER PROVIDED AND INSTALLED BY MECHANICAL CONTRACTOR. PLUMBING CONTRACTOR TO ROUGH-IN AND CONNECT 3/4" (2 psig) GAS LINE COMPLETE WITH PRESSURE REGULATOR, SHUT-OFF VALVE AND FLEXIBLE HOSE FOR CONNECTION. REFER TO DETAIL CP3.1 FOR TYPICAL GAS LINE CONNECTION.
  - GAS FIRED FURNACE AND COOLING COIL FURNISHED AND INSTALL BY MECHANICAL CONTRACTOR. PLUMBING CONTRACTOR TO ROUGH-IN AND CONNECT 3/4" (2 psig) GAS LINE COMPLETE WITH PRESSURE REGULATOR, SHUT-OFF VALVE AND FLEXIBLE HOSE FOR CONNECTION. REFER TO DETAIL CP3.1 FOR TYPICAL GAS LINE CONNECTION. CONNECT 3/4" CONDENSATE DRAIN LINE TO DX COOLING COIL AND RUN TO NEAREST FLOOR DRAIN. CONNECT 3/4" CONDENSATE DRAIN LINE TO FURNACE AND RUN TO NEAREST FLOOR DRAIN. REFER TO FURNACE PIPING DETAIL QM3.1 FOR TYPICAL PIPING CONNECTIONS TO FURNACE.
  - PROVIDE AND INSTALL NEW ELECTRIC WATER HEATER AS SPECIFIED. PROVIDE THERMAL EXPANSION TANK, MIXING VALVE AND HEAT TRAP NIPPLES. ROUGH-IN AND CONNECT 3/4" HOT AND COLD WATER LINES AND 3/4" HOT WATER RECI. LINE WITH RECI. PUMP. REFER TO DETAIL BP3.1 FOR TYPICAL PIPING CONNECTIONS.
  - RISE 2" COLD WATER LINE UP THRU FLOOR AND CONNECT TO PRESSURE REDUCING STATION. RISE 1-1/2" COLD WATER LINE UP TO ABOVE OFFICE AREA CEILING AND RUN TO PLUMBING FIXTURES AS SHOWN. PROVIDE BACK-FLOW PREVENTION DEVICE AND RISE SEPARATE 1" COLD WATER LINE UP IN SHOP. RUN WATER LINES IN SHOPS ALONG WALLS, ABOVE OVERHEAD DOORS. REFER TO DETAIL MP3.1.
  - RUN GAS PIPING, VENT PIPING, AND COMPRESSED AIR LINES AT ROOF LEVEL WHEN GOING ACROSS SHOP AREAS OR WHERE NO CEILING IS PRESENT. FIELD VERIFY EXACT LOCATION WITH EQUIPMENT, OVERHEAD DOORS, AND OTHER PIPING.

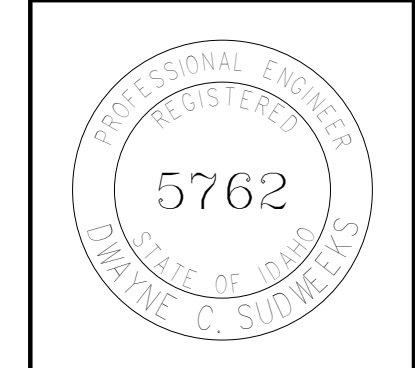
- GENERAL NOTES:**
- THE CONTRACTOR SHALL CHECK AND VERIFY ALL DIMENSIONS AND CONNECTIONS ON THE JOB SITE. ALL WORK SHALL BE EXECUTED FROM MEASUREMENTS TAKEN AT THE SITE.
  - THE MECHANICAL CONTRACTOR SHALL BE RESPONSIBLE TO INSURE PROPER CODE CLEARANCES FOR ELECTRICAL AND MECHANICAL ACCESS WHEN INSTALLING ANY EQUIPMENT SUPPLIED BY THE MECHANICAL CONTRACTOR.
  - IT IS CRITICAL THAT THIS CONTRACTOR COORDINATE EQUIPMENT LOCATIONS WITH PIPING, DUCTWORK, ELECTRICAL CONDUIT AND BUILDING STRUCTURE TO INSURE CODE COMPLIANCE.
  - CEILING DIFFUSERS ARE SHOWN IN APPROXIMATE LOCATIONS. REFER TO LIGHTING PLANS AND REFLECTED CEILING PLAN FOR EXACT LOCATIONS.
  - DUCT DIMENSIONS CALLED OUT ON DRAWINGS ARE INSIDE FREE AREA DIMENSIONS. ACOUSTICAL DUCT LINER ARE TO BE ADDED TO OVERALL MEASUREMENTS.
  - ALL DUCTWORK AND PIPING WHICH PASSES THRU FIRE RATED WALLS TO BE FIRE STOPPED WITH APPROVED FOAM OR SEALANT. REFER TO SPECIFICATIONS FOR APPROVED MANUFACTURES.

ORIGINAL DRAWING SIGNED BY: DWAYNE C. SUDWEEKS  
DATE ORIGINAL SIGNED: April 1, 2019 ORIGINAL ON FILE AT:  
ENGINEERED SYSTEMS ASSOCIATES 1355 EAST CENTER,  
POCATELLO, IDAHO 83201

**Engineered Systems Associates**  
1355 EAST CENTER  
POCATELLO, IDAHO 83201  
PHONE: (208) 233-0501  
FAX: (208) 233-0529  
EMAIL: esa@engsystems.com  
ESA JOB NUMBER: 18023

A NEW FACILITY FOR:  
**BURLEY HIGHWAY DISTRICT**  
**PLUMBING FLOOR PLAN**

**Laughlin Ricks Architecture**  
architecture/planning  
935 Shoshone Street North \* Twin Falls, Idaho 83301  
(208) 736-8050 Fax: (208) 733-0950



DATE: 11/30/18  
MLJ DCS  
Drawn Checked  
**P1.1**